

Application Note

MTE Meter Test Equipment AG
P.O. Box 4544
CH-6304 Zug / Switzerland

Date
January 17, 2014

Version
V1.0

Author
Franz Baumeler

Domicile:
Dammstrasse 16
CH-6300 Zug / Switzerland

Down340 for customers – screen shot and serial command tool

Phone +41-41-724 24 48
Fax +41-41-724 24 25

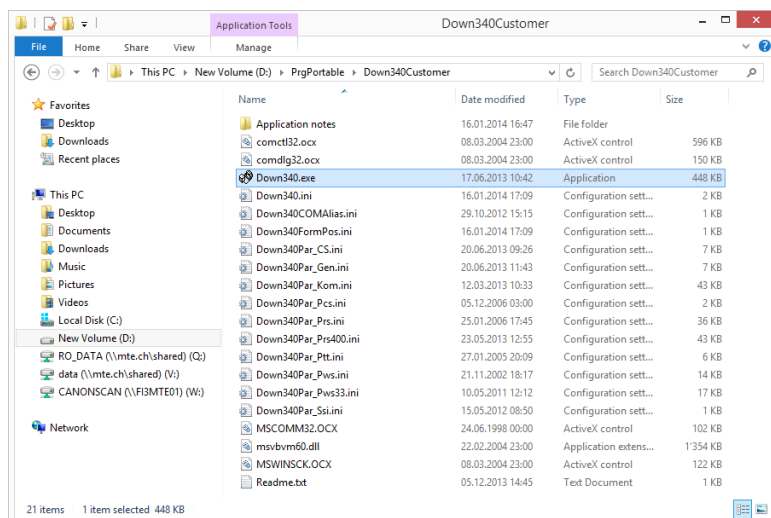
Introduction

The program down340 for customers can be used to send serial commands to the instrument or to make screen shots of the display (options: PRS Screen Grabber activated).

It is not necessary to install the program.

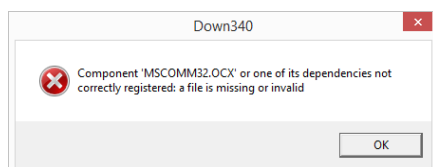
Copy the directory **Down340Customer** with all files on a portable memory or on your PC. This could e.g. be a directory for portable programs, which need not to be installed:

D:\PrgPortable\Down340Customer



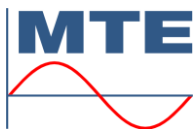
Double click on **down340.exe** to start the program directly from here.

Use the right mouse key over the file **down340.exe** and select **create shortcut** to create a shortcut, which you can copy to the desktop for direct access to the program.



Note: If you use **Windows 7 or 8 operating system**, it can be that you get an error message at first double click on **Down340.exe**.

In this case follow the instructions in section 4. **Trouble shooting at registration problems of *.ocx components** to correctly register these components.



January 17, 2014

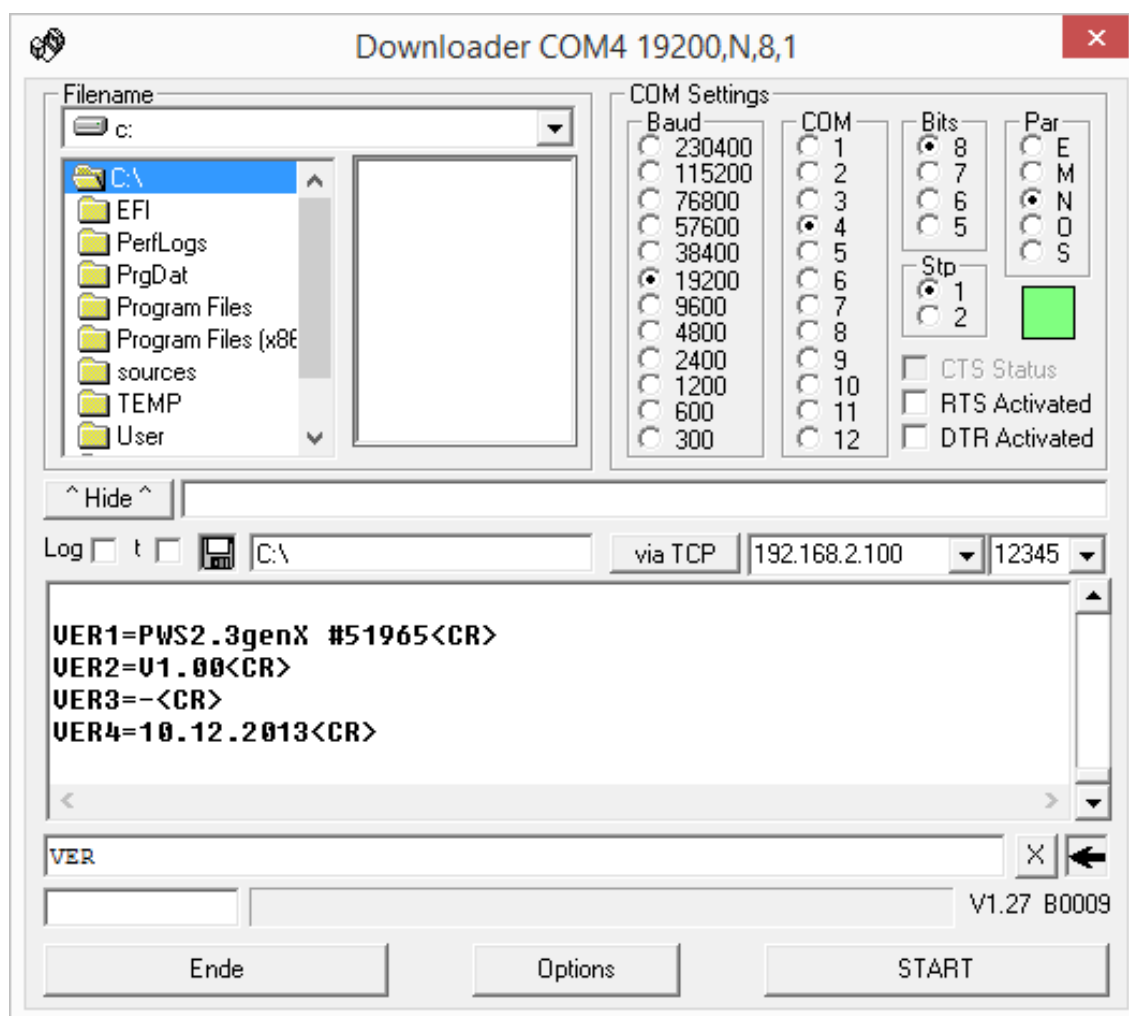
V1.0 / Down340 for customers – screen shot and serial command tool

1. Serial Communication via RS232 or USB (virtual COM port)

Select correct **COM Settings** (example: COM4 19200,N,8,1)

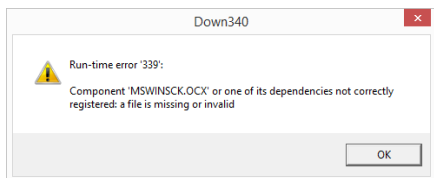
COM port number (COM):	4
Baud rate (Baud):	19200
No parity (Par):	N
Number of bits (Bits):	8
Number of stop bits (Stp):	1

The command line at the bottom can now be used to send commands to the device, e.g. **VER** to get version information of the device.



2. Communication via Ethernet connection

Click the button **via TCP** to change from serial RS232 to Ethernet communication.



Note: If you use **Windows 7 or 8 operating system**, it can be that you get an error message at first click on **via TCP** button.

In this case follow the instructions in chapter 4. **Trouble shooting at registration problems of *.ocx components** to correctly register these components.

Enter IP address and port number (UDP or TCP) of your device.

Example PWS3.3

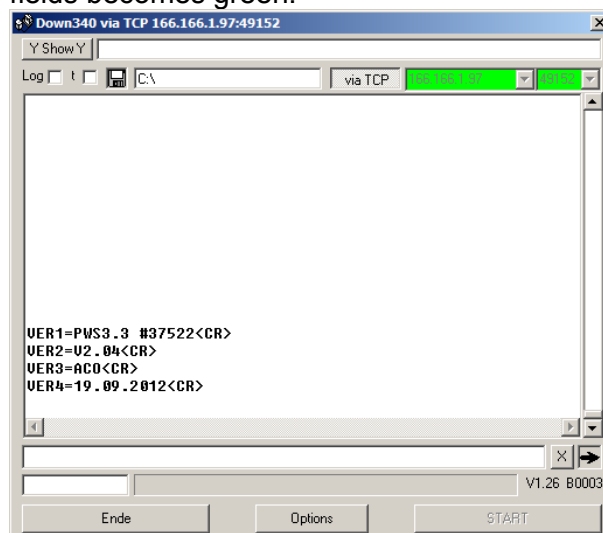
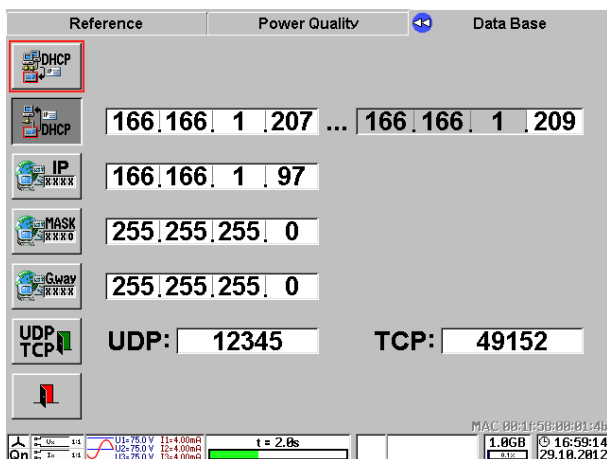
IP: 166.166.1.9

TCP: 49152

Down340 for customer - Ethernet settings

Enter **IP** and **TCP** values of the device in the fields after the button **via TCP**.

If the settings are correct, the background of the fields becomes green.



The command line at the bottom can now be used to send commands to the device, e.g. **VER** to get version information of the device.

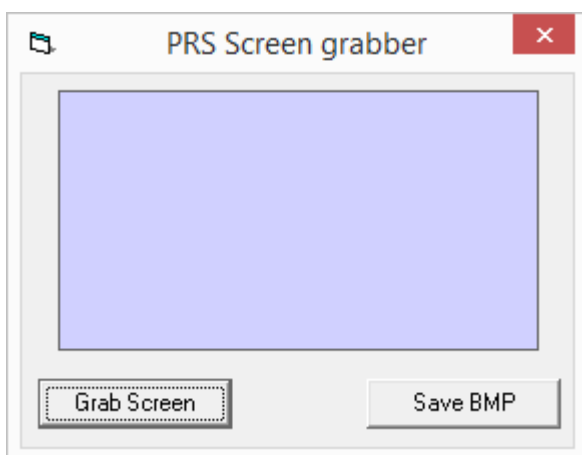
Press **via TCP** button once again to get back to RS232 serial communication.

3. Make a picture of the actual display content of the device

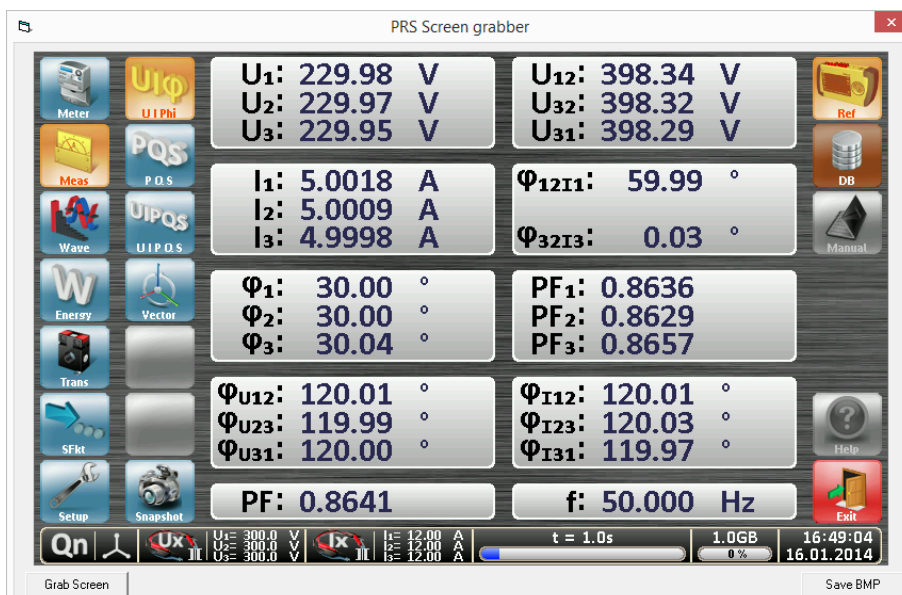
Click on the **black arrow** at the right end of the command line



The screen grabber window opens.



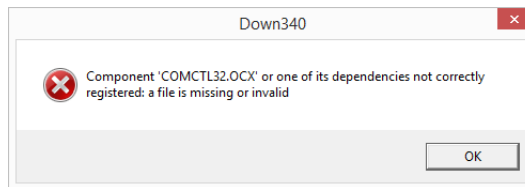
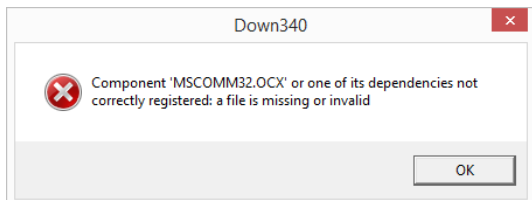
Click on **Grab Screen** button to make a picture of the actual screen.



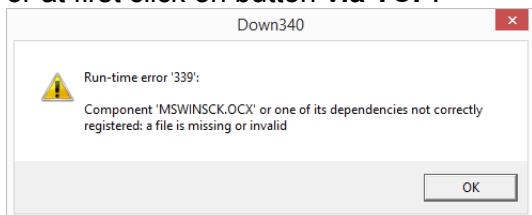
Click on **Save BMP** button to save the picture in ***.BMP** format.

4. Trouble shooting at registration problems of *.ocx components

If you use **Windows 7 or 8 operating system**, it can be, that you get an error message at double click on **Down340.exe**



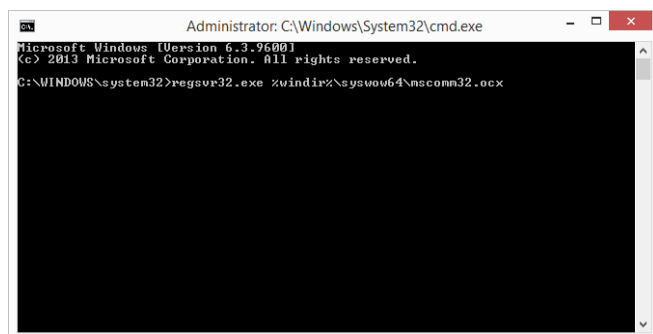
or at first click on button **via TCP**.



All the files **<name>.OCX** mentioned in the error messages need to be registered correctly with the following procedure.

1. Copy the file **<name>.OCX** (e.g. **MSCOMM32.OCX**), which you can find in the **Down340Customer** directory, to the following directory: **C:\Windows\SysWOW64**
You need to be logged in as administrator. Select Continue, if access to folder is denied.
2. Go to **C:\Windows\System32** and search for the program **cmd.exe**. Click with right mouse button on **cmd.exe** and select **Run as administrator**. Confirm the security question with Yes.
3. Write following entry in the command prompt window:

regsvr32.exe %windir%\syswow64\<name>.ocx (example: mscomm32.ocx)



After pressing ENTER you should receive following message:

